



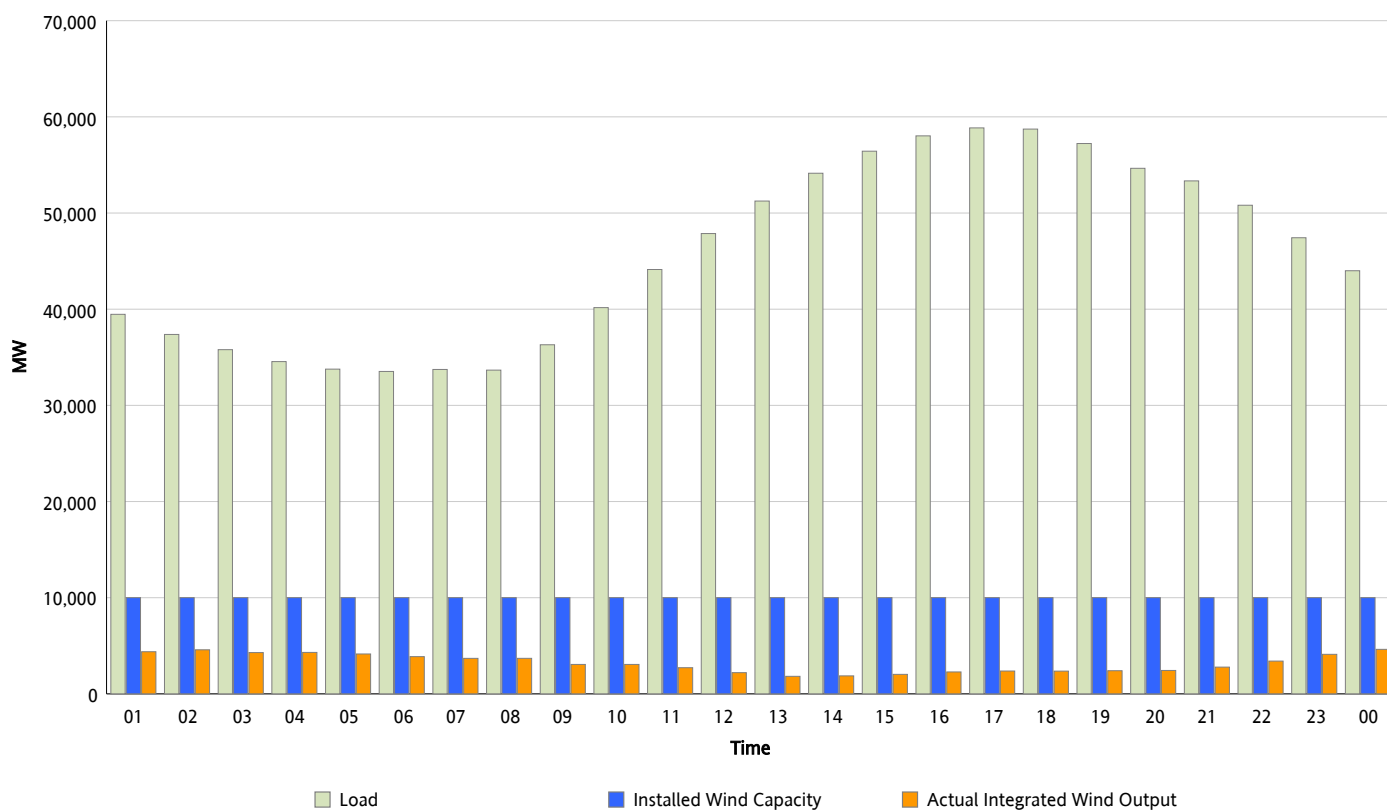
ERCOT Grid Operations

Wind Integration Report : 09/02/2012

Peak Load	58,854 MW
Load Peak Hour (HE)	17
Wind Over Peak	2,375 MW
Wind Record 06/19/12	8,368 MW
Max Wind Value*	4,756 MW
Wind Peak Time	23:42
Wind Integration %	10.99 %

Hourly Average Actual Load vs. Actual Wind Output

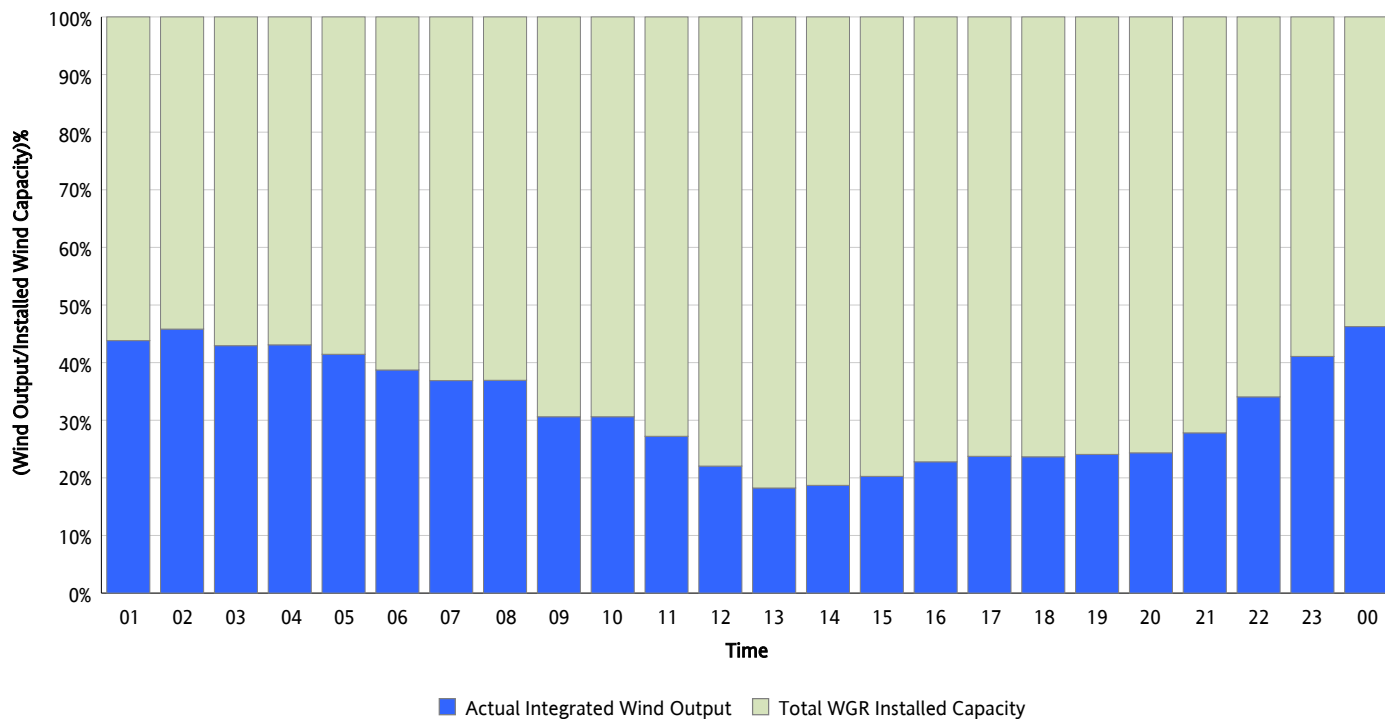
09/02/2012



* Wind Record and Wind Max represent instantaneous values and the rest of the values are integrated over the hour

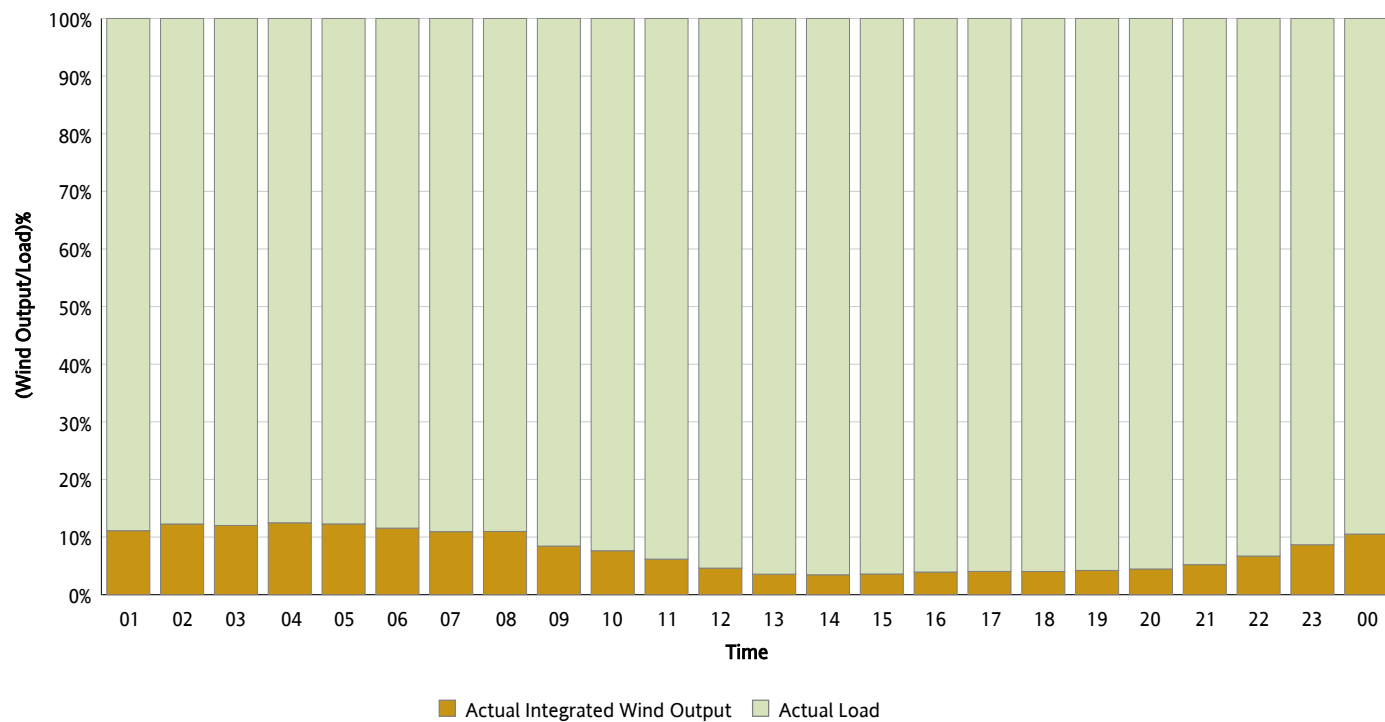
Actual Wind Output as a Percentage of the Total Installed Wind Capacity

09/02/2012



Actual Wind Output as a Percentage of the ERCOT Load

09/02/2012



ERCOT Load vs. Actual Wind Output

08/26/2012 - 09/02/2012

